

**ITEM 4. ITEM FOR COMMITTEE INFORMATION – TEMPORARY ROAD
CLOSURES – ROAD WORKS – EUSTON ROAD ALEXANDRIA**

TRIM RECORD NO: 2016/642284

RECOMMENDATION

It is recommended that the Committee note the temporary closure to the northbound traffic lanes on Euston Road, Alexandria between Campbell Road and Sydney Park Road, from 8pm on 3 January 2017 to 12am (midnight) on 30 April 2017.

VOTING MEMBERS FOR THIS ITEM

<i>Voting Members</i>	<i>Support</i>	<i>Object</i>
City of Sydney		
Roads and Maritime Services		
NSW Police – Redfern LAC		
Representative for the Member for Heffron		

DECISION

BACKGROUND

Hanlow PTY LTD on behalf of Ausgrid will be temporarily closing the northbound traffic lanes in Euston Road, Alexandria between Campbell Road and Sydney Park Road, from 8pm on 3 January 2017 to 12am (midnight) on 30 April 2017. For the duration of these works traffic in Euston Road will be restricted to one way southbound.

COMMENTS

The proposed temporary northbound lane closure between Campbell Road and Sydney Park Road is required to enable the upgrade of essential electrical mains infrastructure for the South Sydney area.

As part of these works two large road openings approximately 3m x 10m are proposed in Euston Road to access the joint bays and conduits and install cable. This will require the removal of parking in the vicinity of the joint bays to safely transition traffic around the worksite.

The Applicant has provided a site-specific Traffic Control Plan that includes details of barricades, signs and other traffic management devices to implement the proposed northbound closure. For the duration of these works traffic will be restricted to one way southbound.

Access to properties in Euston Road will be maintained at all times. Traffic will be required to travel south in Euston Road from Sydney Park Road and turn left into the property. A detour route will be in place. All traffic exiting these properties will be required to turn left and travel south along Euston Road, turn left into Campbell Road and then turn left into Burrows Road to travel north to Huntley Street. Traffic can then either turn left to travel west to Sydney Park Road or turn right to travel east to Bourke Road.

There are currently other temporary road closures related to WestConnex proposed to take place at the same time and in the local area however a traffic assessment has been undertaken to ensure the cumulative impacts can be appropriately managed. The closure of the northbound lanes and the detour route is required to maintain traffic flow and minimise congestion in the local area.

The proposal has the support of the Transport Management Centre, WestConnex and RMS. A Traffic Management Plan (TMP) for the temporary road closure has in-principle approved by Roads and Maritime Services (RMS).

CONSULTATION

The Applicant will notify affected stakeholders in the local area of the temporary northbound closure.

FINANCIAL

All costs associated with the proposed northbound lane closure of Euston Road, Alexandria between Campbell Road and Sydney Park Road, will be borne by the applicant.

ATTACHMENTS

Item for Committee Information – Temporary Road Closures – Road Works – Euston Road Alexandria

Navin Prasad, Traffic & Safety Solutions Pty Ltd



Notes:

1. THE COPYRIGHT OF THIS DRAWING IS VESTED IN TRAFFIC & SAFETY SOLUTIONS PTY LTD. NO PART OF THIS DRAWING IS TO BE REPRODUCED OR USED FOR THE INSTALLATION OF ANY FACILITY WITHOUT THE EXPRESS PERMISSION OF THE COPYRIGHT HOLDERS.
2. ANY DEVIATION FROM THIS PLAN CAN ONLY BE IMPLEMENTED BY AN RMS ACCREDITED TRAFFIC CONTROLLER THAT IS QUALIFIED TO MODIFY TRAFFIC CONTROL PLANS.
3. SHOULD THIS PLAN BE MODIFIED TRAFFIC & SAFETY SOLUTIONS PTY LTD CANNOT BE HELD LIABLE OR RESPONSIBLE FOR ANY INCIDENT OR DAMAGE CAUSED BY SUCH DEVIATIONS. TRAFFIC CONTROL PLANS AND THIS PLAN WILL BE CONSIDERED NULL AND VOID.
4. THIS TRAFFIC CONTROL PLAN HAS BEEN DRAFTED USING AERIAL PHOTOS AND HAS NOT BEEN VERIFIED BY SURVEY.
5. TRAFFIC & SAFETY SOLUTIONS PTY LTD DOES NOT ACCEPT ANY LIABILITY FOR THE IMPLEMENTATION OF THIS PLAN.
6. THE DRAWINGS, SIGNAGE, MARKERS AND INSTRUMENTS FOR THE CONTROL OF TRAFFIC ONLY ARE NOT INTENDED FOR THE CONSTRUCTION OF ANY TRAFFIC DEVICE OR FACILITY.
7. ALL DIMENSIONS ARE IN METRES. DO NOT SCALE OFF DRAWING.
8. ALL TRAFFIC SIGNS, THE SPACING OF SIGNS AND DEVICES ARE TO BE CONTROLLED AT WORKSITES MANUAL V4.0.
9. ALL PLANS AND VERGES LENGTHS ARE TO BE INSTALLED IN ACCORDANCE WITH MSA 102.03 AND THE RMS TRAFFIC CONTROL AT WORKSITES MANUAL V4.0.
10. THIS PLAN IS TO BE IMPLEMENTED BY AN RMS ACCREDITED TRAFFIC CONTROLLER.
11. THE PLACEMENT OF TRAFFIC SIGNS AND/OR DEVICES TO CONTROL TRAFFIC MUST BE CHECKED ON SITE TO ENSURE THAT THE PLAN IS FIT FOR PURPOSE AND THAT ARE CLEARLY VISIBLE TO TRAFFIC AND NOT OBLSCURED BY VEGETATION OR OTHER STRUCTURES.

REV:	DESCRIPTION:	BY:	DATE:
A	SUBMITTED FOR APPROVAL	NP	01/12/16

STATUS: FOR APPROVAL

TRAFFIC & SAFETY SOLUTIONS PTY LTD
 16 HUNLOP STREET
 SOUTH STRATHFIELD
 NSW 2136

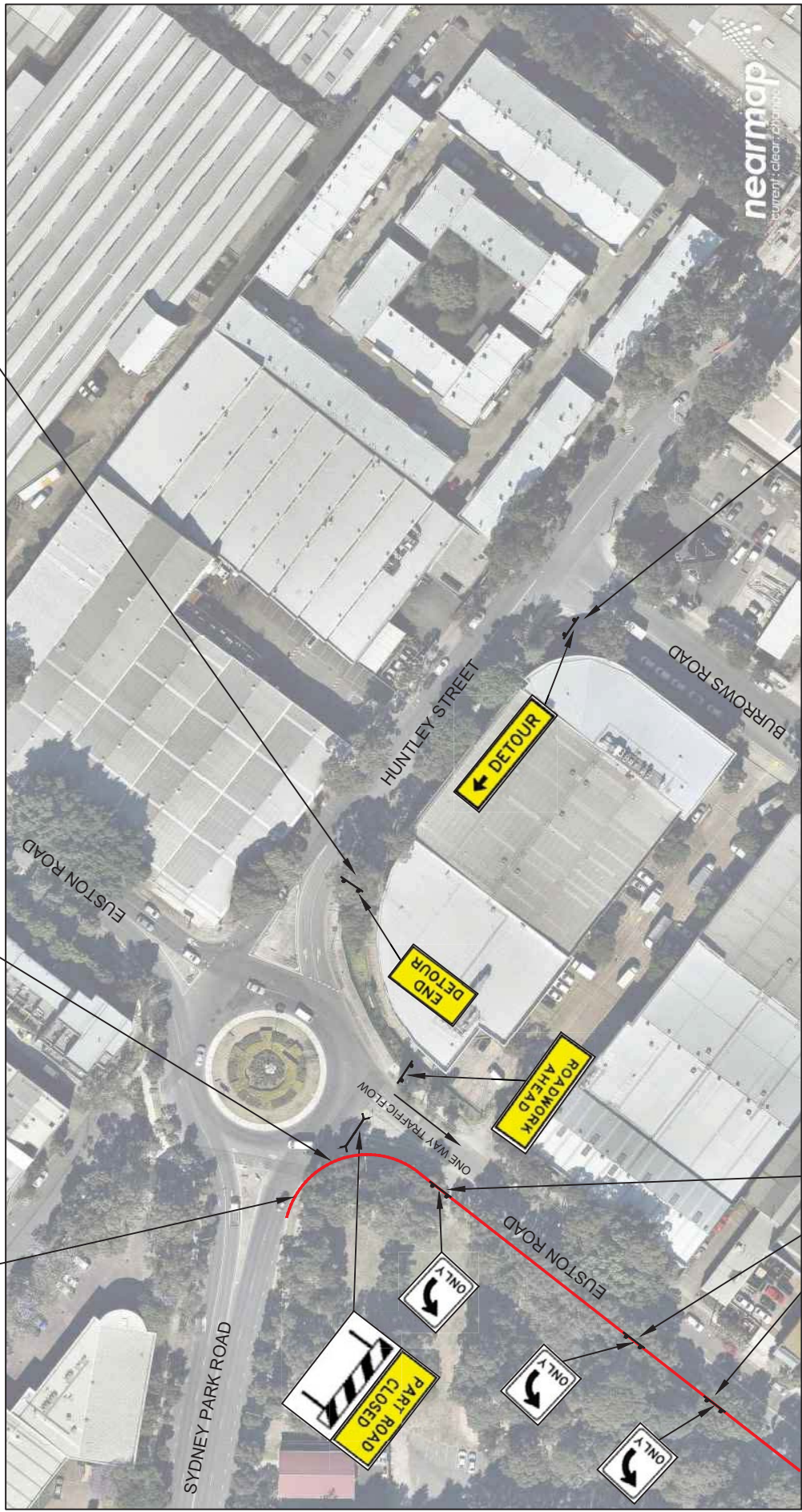
CLIENT: HANLOW PTY LTD
 16 HUNLOP STREET
 SOUTH STRATHFIELD
 NSW 2136

DRAWN: TRAFFIC & SAFETY SOLUTIONS PTY LTD
 NAVIN PRASAD
 19 FORGE STREET
 BLACKTOWN NSW 2148

SITE: EUSTON ROAD, ALEXANDRIA
 CAMPBELL RD TO SYDNEY PARK RD

TITLE: TRAFFIC CONTROL PLAN
 EUSTON ROAD - ONE WAY SOUTHBOUND

SCALE AT A2:	DATE:	DRAWN:	CHECKED:
NOT TO SCALE	01/12/16	NP	NP
SHEET NO.:	DRAWING NO.:	REVISION:	
1/6	TSS-161117-1	A	



EXISTING WESTCONNEX SAFETY BARRIER TO REMAIN

INSTALL PART ROAD CLOSED T2-5 SIGN AND BARRIER BOARD TO CLOSE NORTHBOUND LANES AT ROUNDABOUT

INSTALL END DETOUR T2-23 SIGN

INSTALL DETOUR T5-1(L) SIGN

INSTALL LEFT ONLY R2-14(L) SIGNS ON EXISTING WESTCONNEX SAFETY BARRIER OPPOSITE ALL DRIVEWAYS



Notes:

1. THE WORK OF THIS DRAWING IS VISITED IN TRAFFIC & SAFETY SOLUTIONS PTY LTD'S OFFICE AND NOT IN THE FIELD. THE DRAWING IS NOT TO BE USED FOR THE INSTALLATION OF ANY FACILITY WITHOUT THE EXPRESS PERMISSION OF THE COPYRIGHT HOLDER.
2. ANY DEVIATION FROM THIS PLAN CAN ONLY BE IMPLEMENTED BY AN RMS ACCREDITED TRAFFIC CONTROLLER THAT IS QUALIFIED TO MODIFY TRAFFIC CONTROL PLANS.
3. SHOULD THIS PLAN BE MODIFIED TRAFFIC & SAFETY SOLUTIONS PTY LTD CANNOT BE HELD LIABLE OR RESPONSIBLE FOR ANY INCIDENT OR DAMAGE TO PERSONS OR PROPERTY. TRAFFIC CONTROL PLAN AND THIS PLAN WILL BE CONSIDERED NULL AND VOID.
4. THIS TRAFFIC CONTROL PLAN HAS BEEN DRAFTED USING AERIAL PHOTOS AND HAS NOT BEEN VERIFIED BY SURVEY. TRAFFIC & SAFETY SOLUTIONS PTY LTD DOES NOT ACCEPT ANY LIABILITY FOR THE ACCURACY OF THE INFORMATION THAT MAY BE REQUIRED FOR THE IMPLEMENTATION OF THIS PLAN.
5. THIS DRAWING IS FOR GUIDANCE AND PURPOSES FOR THE CONTROL OF TRAFFIC ONLY. IT IS NOT INTENDED FOR THE CONSTRUCTION OF ANY TRAFFIC DEVICE OR FACILITY.
6. ALL DIMENSIONS ARE IN METRES. DO NOT SCALE OFF DRAWING.
7. ALL TRAFFIC SIGNS, THE SPACING OF SIGNS AND DEVICES ARE TO BE CONTROLLED AT WORKSITES MANUAL V4.0.
8. ALL LANE AND WEDGE LENGTHS ARE TO BE INSTALLED IN ACCORDANCE WITH MAST H2020 AND THE RMS TRAFFIC CONTROL AT WORKSITES MANUAL V4.0.
9. THIS PLAN IS TO BE IMPLEMENTED BY AN RMS ACCREDITED TRAFFIC CONTROLLER.
10. THE PLACEMENT OF TRAFFIC SIGNS AND/OR DEVICES TO CONTROL TRAFFIC MUST BE CHECKED ON SITE TO ENSURE THAT THE PLAN IS FIT FOR PURPOSE AND THAT ARE CLEARLY VISIBLE TO TRAFFIC AND NOT OBLSCURED BY VEGETATION OR OTHER STRUCTURES.

REV:	DESCRIPTION:	BY:	DATE:
A	SUBMITTED FOR APPROVAL	NP	01/12/16

STATUS: FOR APPROVAL

TRAFFIC & SAFETY SOLUTIONS PTY LTD
 11-13 BENTLEY RD, BENTLEY NSW 2155
 TEL: 02 9515 2111 FAX: 02 9515 2119
 www.trafficandsafety.com.au

CLIENT: HANLOW PTY LTD
 14 DUNLOP STREET
 SOUTH STRATHFIELD
 NSW 2136

DRAWN: TRAFFIC & SAFETY SOLUTIONS PTY LTD
 NAVIN PRASAD
 19 FORGE STREET
 BLACKTOWN NSW 2148

SITE: EUSTON ROAD, ALEXANDRIA
 CAMPBELL RD TO SYDNEY PARK RD

TITLE: TRAFFIC CONTROL PLAN
 EUSTON ROAD - ONE WAY SOUTHBOUND

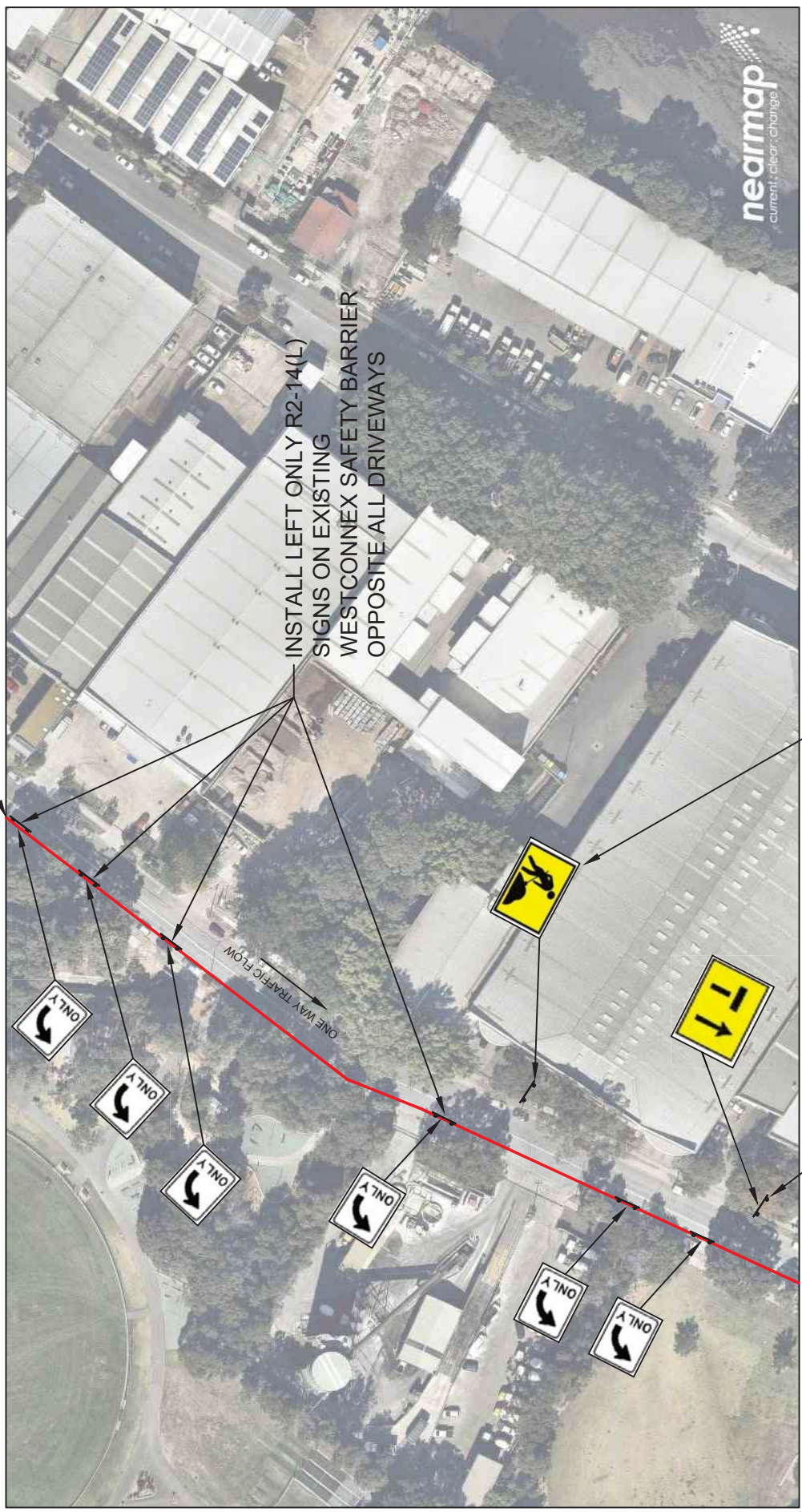
SCALE AT ASZ:	DATE:	DRAWN:	CHECKED:
NOT TO SCALE	01/12/16	NP	NP
SHEET NO.:	DRAWING NO.:	REVISION:	
2/6	TSS-161117-1	A	

EXISTING WESTCONNEX SAFETY BARRIER TO REMAIN

INSTALL LEFT ONLY R2-14(L) SIGNS ON EXISTING WESTCONNEX SAFETY BARRIER OPPOSITE ALL DRIVEWAYS

INSTALL T1-5 WORKMEN SIGN 100m NORTH OF WORKSITE 3

INSTALL LEFT LANE CLOSED T2-6-1 SIGN 50m NORTH OF WORKSITE 3





Notes:

1. THE COPYRIGHT OF THIS DRAWING IS VESTED IN TRAFFIC & SAFETY SOLUTIONS PTY LTD. NO PART OF THIS DRAWING IS TO BE REPRODUCED OR USED FOR THE INSTALLATION OF ANY FACILITY WITHOUT THE EXPRESS PERMISSION OF THE COPYRIGHT HOLDERS.
2. ANY DEVIATION FROM THIS PLAN CAN ONLY BE IMPLEMENTED BY AN IRMS ACCREDITED TRAFFIC CONTROLLER THAT IS QUALIFIED TO MODIFY TRAFFIC CONTROL PLANS.
3. SHOULD THIS PLAN BE MODIFIED TRAFFIC & SAFETY SOLUTIONS PTY LTD CANNOT BE HELD LIABLE OR RESPONSIBLE FOR ANY INCIDENT OR DAMAGE TO PROPERTY OR PERSONS THAT MAY BE CAUSED BY SUCH MODIFICATION. THIS PLAN WILL BE CONSIDERED NULL AND VOID.
4. THIS TRAFFIC CONTROL PLAN HAS BEEN DRAFTED USING AERIAL PHOTOS AND HAS NOT BEEN VERIFIED BY SURVEY. TRAFFIC & SAFETY SOLUTIONS PTY LTD DOES NOT ACCEPT ANY LIABILITY FOR THE IMPLEMENTATION OF THIS PLAN.
5. THIS PLAN IS TO BE USED AS A GUIDE ONLY. THE CONTROL OF TRAFFIC ONLY IS NOT INTENDED FOR THE CONSTRUCTION OF ANY TRAFFIC DEVICE OR FACILITY.
6. ALL DIMENSIONS ARE IN METRES. DO NOT SCALE OFF DRAWING.
7. ALL TRAFFIC SIGNS, THE SPACING OF SIGNS AND DEVICES ARE TO BE CONTROLLED AT WORKSITES MANUAL V4.0.
8. ALL PLANS AND DEVICES LENGTHS ARE TO BE IN ACCORDANCE WITH AS 1742.03 AND THE IRMS TRAFFIC CONTROL AT WORKSITES MANUAL V4.0.
9. THIS PLAN IS TO BE IMPLEMENTED BY AN IRMS ACCREDITED TRAFFIC CONTROLLER.
10. THE PLACEMENT OF TRAFFIC SIGNS AND/OR DEVICES TO CONTROL TRAFFIC MUST BE CHECKED ON SITE TO ENSURE THAT THE PLAN IS FIT FOR PURPOSE AND THAT ARE CLEARLY VISIBLE TO TRAFFIC AND NOT OBLSCURED BY VEGETATION OR OTHER STRUCTURES.

REV:	DESCRIPTION:	BY:	DATE:
A	SUBMITTED FOR APPROVAL	NP	01/12/16

STATUS: FOR APPROVAL

TRAFFIC & SAFETY SOLUTIONS PTY LTD
 15 BUNLOP STREET
 SOUTH STRATHFIELD
 NSW 2136

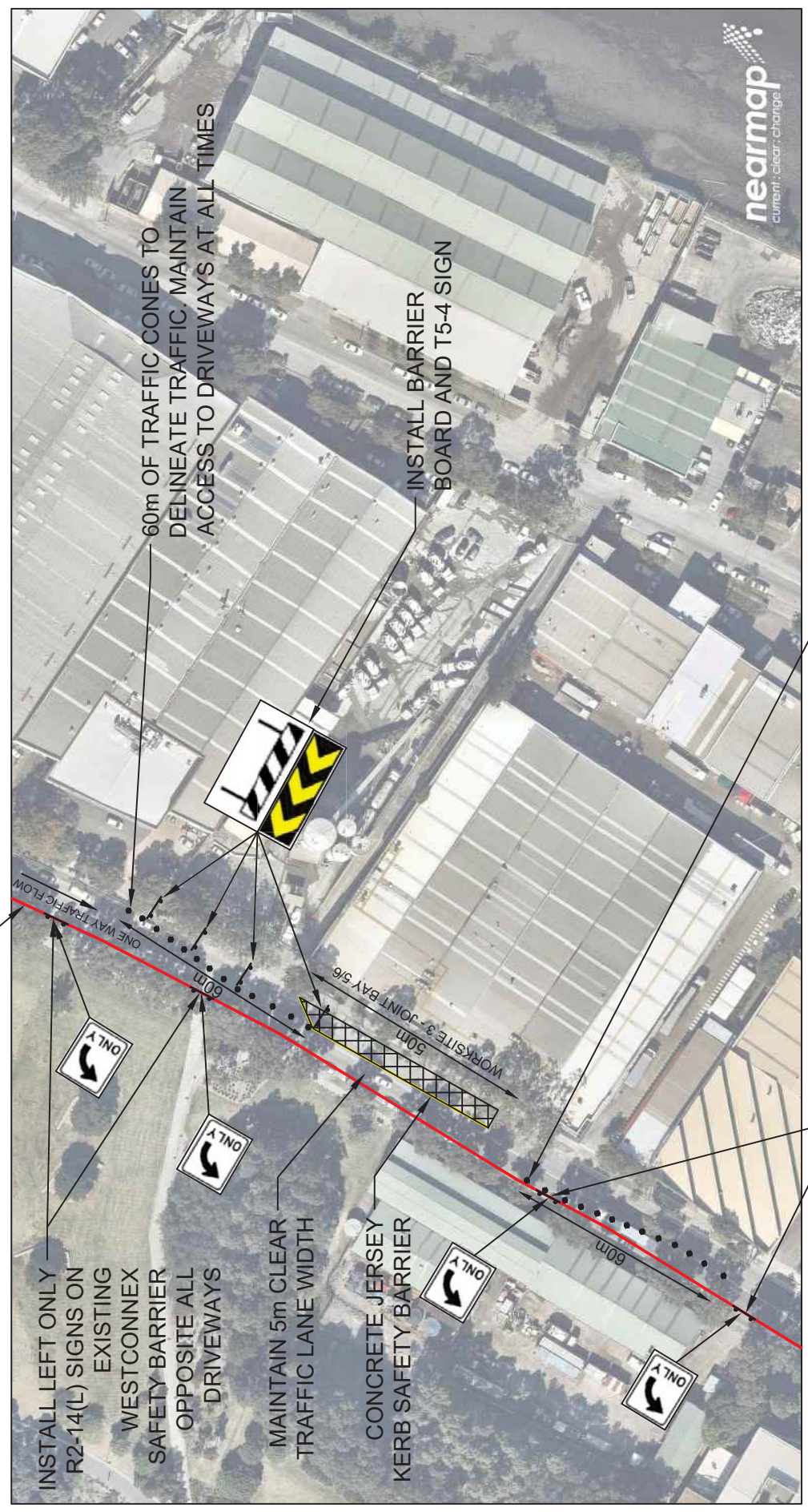
CLIENT: HANLOW PTY LTD
 16 BUNLOP STREET
 SOUTH STRATHFIELD
 NSW 2136

DRAWN: TRAFFIC & SAFETY SOLUTIONS PTY LTD
 NAVIN PRASAD
 19 FORGE STREET
 BLACKTOWN NSW 2148

SITE: EUSTON ROAD, ALEXANDRIA
 CAMPBELL RD TO SYDNEY PARK RD

TITLE: TRAFFIC CONTROL PLAN

SCALE AT AS:	DATE:	DRAWN:	CHECKED:
NOT TO SCALE	01/12/16	NP	NP
SHEET NO.:	DRAWING NO.:	REVISION:	
3/6	TSS-161117-1	A	



EXISTING WESTCONNEX SAFETY BARRIER TO REMAIN

INSTALL LEFT ONLY R2-14(L) SIGNS ON EXISTING WESTCONNEX SAFETY BARRIER OPPOSITE ALL DRIVEWAYS

MAINTAIN 5m CLEAR TRAFFIC LANE WIDTH

CONCRETE JERSEY KERB SAFETY BARRIER

INSTALL BARRIER BOARD AND T5-4 SIGN

60m OF TRAFFIC CONES TO DELINEATE TRAFFIC. MAINTAIN ACCESS TO DRIVEWAYS AT ALL TIMES

INSTALL LEFT ONLY R2-14(L) SIGNS ON EXISTING WESTCONNEX SAFETY BARRIER OPPOSITE ALL DRIVEWAYS

60m OF TRAFFIC CONES TO DELINEATE TRAFFIC. MAINTAIN ACCESS TO DRIVEWAYS AT ALL TIMES



Notes:

1. THE COPYRIGHT OF THIS DRAWING IS VESTED IN TRAFFIC & SAFETY SOLUTIONS PTY LTD. NO PART OR USED FOR THE INSTALLATION OF ANY FACILITY WITHOUT THE EXPRESS PERMISSION OF THE COPYRIGHT HOLDERS.
2. ANY DEVIATION FROM THIS PLAN CAN ONLY BE IMPLEMENTED BY AN RMS ACCREDITED TRAFFIC CONTROLLER THAT IS QUALIFIED TO MODIFY TRAFFIC CONTROL PLANS.
3. SHOULD THIS PLAN BE MODIFIED TRAFFIC & SAFETY SOLUTIONS PTY LTD CANNOT BE HELD LIABLE OR RESPONSIBLE FOR ANY INCIDENT OR DAMAGE TO PERSONS OR PROPERTY THAT MAY OCCUR. THIS PLAN WILL BE CONSIDERED NULL AND VOID.
4. THIS TRAFFIC CONTROL PLAN HAS BEEN DRAFTED USING AERIAL PHOTOS AND HAS NOT BEEN VERIFIED BY SURVEY. TRAFFIC & SAFETY SOLUTIONS PTY LTD DOES NOT ACCEPT ANY LIABILITY FOR THE ACCURACY OF THE INFORMATION THAT MAY BE REQUIRED FOR THE IMPLEMENTATION OF THIS PLAN.
5. THIS PLAN IS FOR INFORMATION AND INTENDED FOR THE CONTROL OF TRAFFIC ONLY. IT IS NOT INTENDED FOR THE CONSTRUCTION OF ANY TRAFFIC DEVICE OR FACILITY.
6. ALL DIMENSIONS ARE IN METRES. DO NOT SCALE OFF DRAWING.
7. ALL TRAFFIC SIGNS, THE SPACING OF SIGNS AND DEVICES ARE TO BE CONTROLLED AT WORKSITES MANUAL V4.0.
8. ALL LANE AND WEDGE LENGTHS ARE TO BE INSTALLED IN ACCORDANCE WITH M3742.03 AND THE RMS TRAFFIC CONTROL AT WORKSITES MANUAL V4.0.
9. THIS PLAN IS TO BE IMPLEMENTED BY AN RMS ACCREDITED TRAFFIC CONTROLLER.
10. THE PLACEMENT OF TRAFFIC SIGNS AND/OR DEVICES TO CONTROL TRAFFIC MUST BE CHECKED ON SITE TO ENSURE THAT THE PLAN IS FIT FOR PURPOSE AND THAT ARE CLEARLY VISIBLE TO TRAFFIC AND NOT OBLSCURED BY VEGETATION OR OTHER STRUCTURES.

REV:	DESCRIPTION:	BY:	DATE:
A	SUBMITTED FOR APPROVAL	NP	01/12/16

STATUS: **FOR APPROVAL**

TRAFFIC & SAFETY SOLUTIONS PTY LTD
11-13 SMITH ST, SUITE 408, ALEXANDRIA NSW 2161
PHONE: 02 9555 2111 FAX: 02 9555 2119
WWW.TSSAUSTRALIA.COM

CLEAR: HANLOW PTY LTD
14 DUNDLOP STREET
SOUTH STRATHFIELD
NSW 2136

DRAWN: TRAFFIC & SAFETY SOLUTIONS PTY LTD
NAVIN PRASAD
19 FORGE STREET
BLACKTOWN NSW 2148

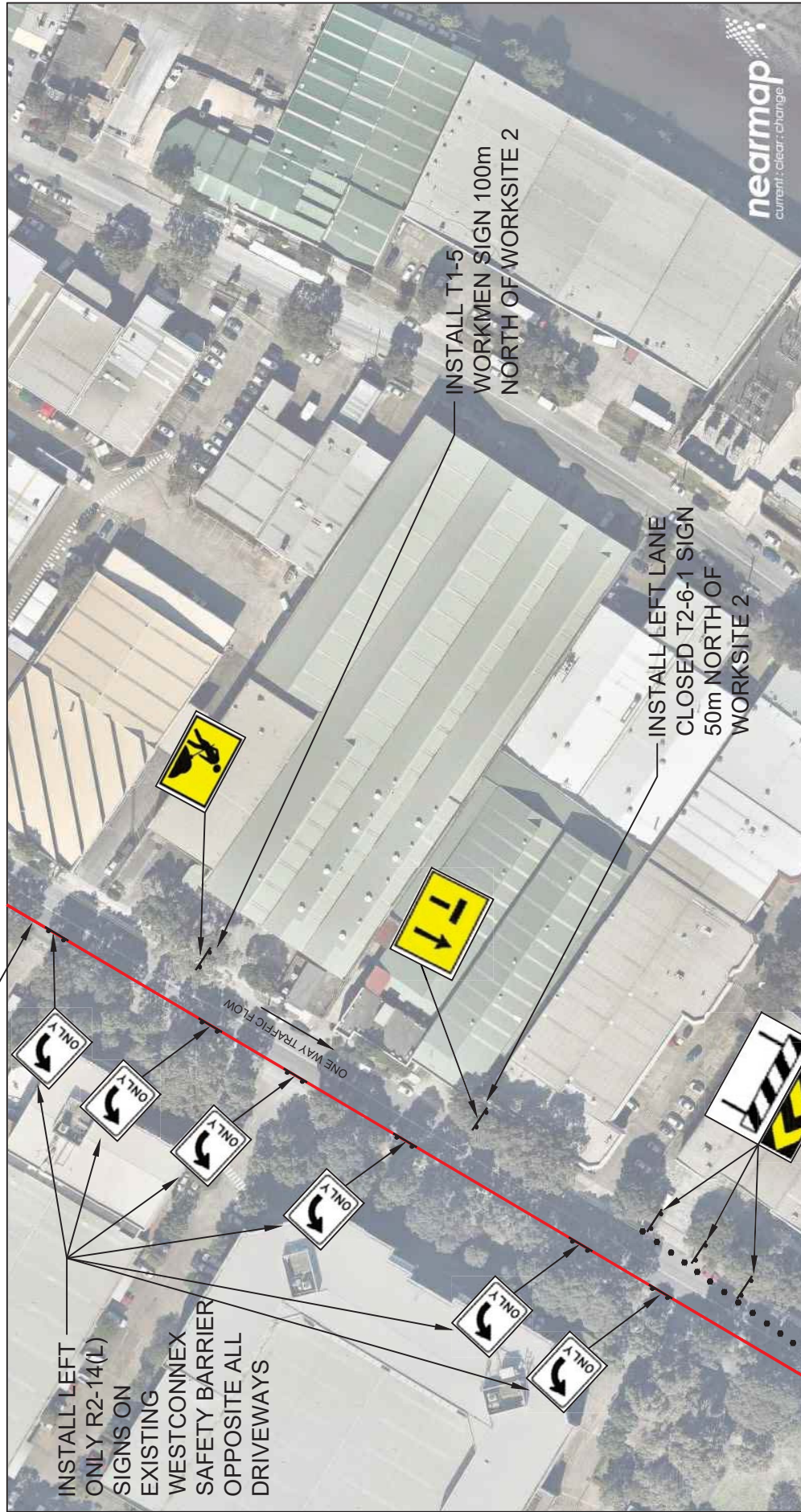
SITE: EUSTON ROAD, ALEXANDRIA
CAMPBELL RD TO SYDNEY PARK RD

TITLE: TRAFFIC CONTROL PLAN

SCALE AT AS:	DATE:	DRAWN:	CHECKED:
NOT TO SCALE	01/12/16	NP	NP
SHEET NO:	DRAWING NO:	REVISION:	
4/6	TSS-161117-1	A	

EXISTING WESTCONNEX
SAFETY BARRIER TO REMAIN

INSTALL LEFT
ONLY R2-14(L)
SIGNS ON
EXISTING
WESTCONNEX
SAFETY BARRIER
OPPOSITE ALL
DRIVEWAYS



INSTALL T1-5
WORKMEN SIGN 100m
NORTH OF WORKSITE 2

INSTALL LEFT LANE
CLOSED T2-6-1 SIGN
50m NORTH OF
WORKSITE 2





Notes:

1. THE COPYRIGHT OF THIS DRAWING IS VESTED IN TRAFFIC & SAFETY SOLUTIONS PTY LTD. NO PART OR USED FOR THE INSTALLATION OF ANY FACILITY WITHOUT THE EXPRESS PERMISSION OF THE COPYRIGHT HOLDERS.
2. ANY DEVIATION FROM THIS PLAN CAN ONLY BE IMPLEMENTED BY AN RMS ACCREDITED TRAFFIC CONTROLLER THAT IS QUALIFIED TO MODIFY TRAFFIC CONTROL PLANS.
3. SHOULD THIS PLAN BE MODIFIED TRAFFIC & SAFETY SOLUTIONS PTY LTD CANNOT BE HELD LIABLE OR RESPONSIBLE FOR ANY INCIDENT OR DAMAGE TO PERSONS OR PROPERTY. TRAFFIC CONTROL PLAN AND THIS PLAN WILL BE CONSIDERED NULL AND VOID.
4. THIS TRAFFIC CONTROL PLAN HAS BEEN DRAFTED USING AERIAL PHOTOS AND HAS NOT BEEN VERIFIED BY SURVEY.
5. TRAFFIC & SAFETY SOLUTIONS PTY LTD DOES NOT ACCEPT ANY LIABILITY FOR THE IMPLEMENTATION OF THIS PLAN.
6. THIS PLAN IS TO BE USED AS A GUIDE ONLY. THE CONTROL OF TRAFFIC ONLY IS NOT INTENDED FOR THE CONSTRUCTION OF ANY TRAFFIC DEVICE OR FACILITY.
7. ALL DIMENSIONS ARE IN METRES. DO NOT SCALE OFF DRAWING.
8. ALL TRAFFIC SIGNS, THE SPACING OF SIGNS AND DEVICES ARE TO BE IN ACCORDANCE WITH THE WORKSITES MANUAL V4.0 AND THE RMS TRAFFIC CONTROL AT WORKSITES MANUAL V4.0.
9. ALL SIGNS AND DEVICES LENGTHS ARE TO BE INSTALLED IN ACCORDANCE WITH WS142/03 AND THE RMS TRAFFIC CONTROL AT WORKSITES MANUAL V4.0.
10. THIS PLAN IS TO BE IMPLEMENTED BY AN RMS ACCREDITED TRAFFIC CONTROLLER.
11. THE PLACEMENT OF TRAFFIC SIGNS AND/OR DEVICES TO CONTROL TRAFFIC MUST BE CHECKED ON SITE TO ENSURE THAT THE PLAN IS FIT FOR PURPOSE AND THAT ARE CLEARLY VISIBLE TO TRAFFIC AND NOT OBLSCURED BY VEGETATION OR OTHER STRUCTURES.

REV:	DESCRIPTION:	BY:	DATE:
A	SUBMITTED FOR APPROVAL	NP	01/12/16

STATUS: FOR APPROVAL

TRAFFIC & SAFETY SOLUTIONS PTY LTD
 16 HUNLOP STREET
 SOUTH STRATHFIELD
 NSW 2136

CLIENT: HANLOW PTY LTD
 16 HUNLOP STREET
 SOUTH STRATHFIELD
 NSW 2136

DRAWN: TRAFFIC & SAFETY SOLUTIONS PTY LTD
 NAVIN PRASAD
 19 FORGE STREET
 BLACKTOWN NSW 2148

SITE: EUSTON ROAD, ALEXANDRIA
 CAMPBELL RD TO SYDNEY PARK RD

TITLE: TRAFFIC CONTROL PLAN
 EUSTON ROAD - ONE WAY SOUTHBOUND

SCALE AT A3:	DATE:	DRAWN:	CHECKED:
NOT TO SCALE	01/12/16	NP	NP
SHEET NO.:	DRAWING NO.:	REVISION:	
5/6	TSS-161117-1	A	

EXISTING WESTCONNEX SAFETY BARRIER TO REMAIN

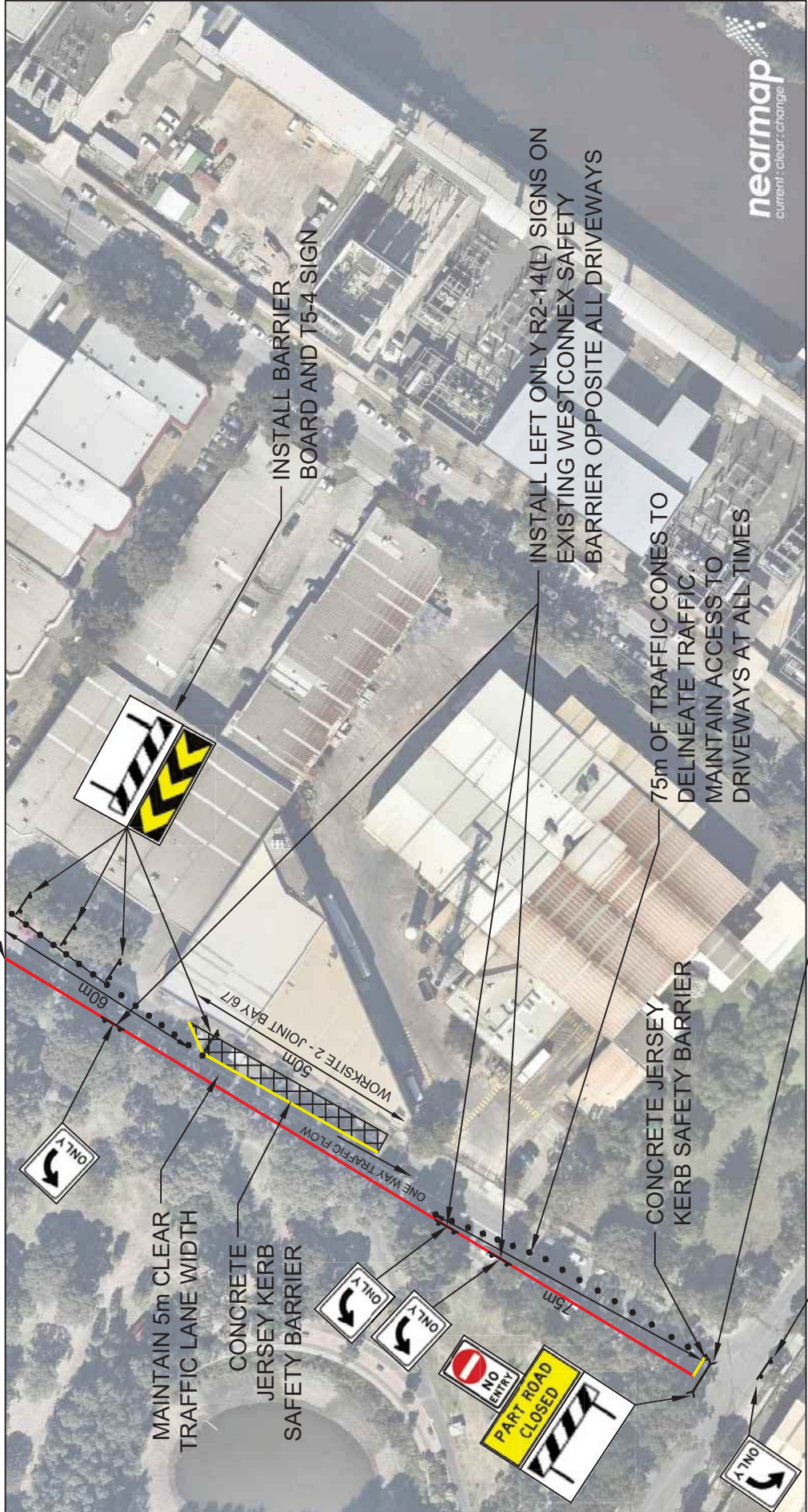
INSTALL BARRIER BOARD AND T5-4 SIGN

INSTALL LEFT ONLY R2-14(L) SIGNS ON EXISTING WESTCONNEX SAFETY BARRIER OPPOSITE ALL DRIVEWAYS

75m OF TRAFFIC CONES TO DELINEATE TRAFFIC. MAINTAIN ACCESS TO DRIVEWAYS AT ALL TIMES

INSTALL PART ROAD CLOSED T2-5 SIGN, NO ENTRY SIGN AND BARRIER BOARD TO CLOSE EUSTON ROAD NORTHBOUND LANES

INSTALL LEFT ONLY R2-14(L) SIGNS OPPOSITE EUSTON ROAD



MAINTAIN 5m CLEAR TRAFFIC LANE WIDTH
 CONCRETE JERSEY KERB SAFETY BARRIER

CONCRETE JERSEY KERB SAFETY BARRIER

60m

50m
 WORKSITE - JOINT BAY 6/7

ONE WAY TRAFFIC FLOW

75m





Notes:

1. THE WORKING OF THIS DRAWING IS VESTED IN TRAFFIC & SAFETY SOLUTIONS PTY LTD. IT IS TO BE USED FOR THE INSTALLATION OF ANY FACILITY WITHOUT THE EXPRESS PERMISSION OF THE COPYRIGHT HOLDERS.
2. ANY DEVIATION FROM THIS PLAN CAN ONLY BE IMPLEMENTED BY AN RMS ACCREDITED TRAFFIC CONTROLLER THAT IS QUALIFIED TO MODIFY TRAFFIC CONTROL PLANS.
3. SHOULD THIS PLAN BE MODIFIED TRAFFIC & SAFETY SOLUTIONS PTY LTD CANNOT BE HELD LIABLE FOR RESPONSIBILITY FOR ANY INCIDENT OR DAMAGE THAT MAY OCCUR AS A RESULT OF ANY SUCH MODIFICATION. THIS PLAN WILL BE CONSIDERED NULL AND VOID.
4. THIS TRAFFIC CONTROL PLAN HAS BEEN DRAFTED USING AERIAL PHOTOS AND HAS NOT BEEN VERIFIED BY SURVEY. TRAFFIC & SAFETY SOLUTIONS PTY LTD DOES NOT ACCEPT ANY LIABILITY FOR THE ACCURACY OF THE INFORMATION PROVIDED IN THIS PLAN OR THE IMPLEMENTATION OF THIS PLAN.
5. THE DRAWINGS, DIMENSIONS AND NOTICES ARE TO BE INTERPRETED AS TRAFFIC CONTROL MEASURES INTENDED FOR THE CONSTRUCTION OF ANY TRAFFIC DEVICE OR FACILITY.
6. ALL DIMENSIONS ARE IN METRES. DO NOT SCALE OFF DRAWING.
7. ALL TRAFFIC SIGNS, THE SPACING OF SIGNS AND DEVICES ARE TO BE CONTROLLED AT WORKSITES MANUAL V4.0.
8. ALL LANE AND WEDGE LENGTHS ARE TO BE MEASURABLE IN ACCORDANCE WITH MSA1/2013 AND THE RMS TRAFFIC CONTROL AT WORKSITES MANUAL V4.0.
9. THIS PLAN IS TO BE IMPLEMENTED BY AN RMS ACCREDITED TRAFFIC CONTROLLER.
10. THE PLACEMENT OF TRAFFIC SIGNS AND/OR DEVICES TO CONTROL TRAFFIC MUST BE CHECKED ON SITE TO ENSURE THAT THE PLAN IS FIT FOR PURPOSE AND THAT ARE CLEARLY VISIBLE TO TRAFFIC AND NOT OBLSCURED BY VEGETATION OR OTHER STRUCTURES.

REV:	DESCRIPTION:	BY:	DATE:
A	SUBMITTED FOR APPROVAL	NP	01/12/16

STATUS: FOR APPROVAL

TRAFFIC & SAFETY SOLUTIONS PTY LTD
 11-13 SMITH ST, SUITE 401, SYDNEY NSW 2000
 T: 02 9551 2111 FAX: 02 9551 2112
 www.tss.com.au

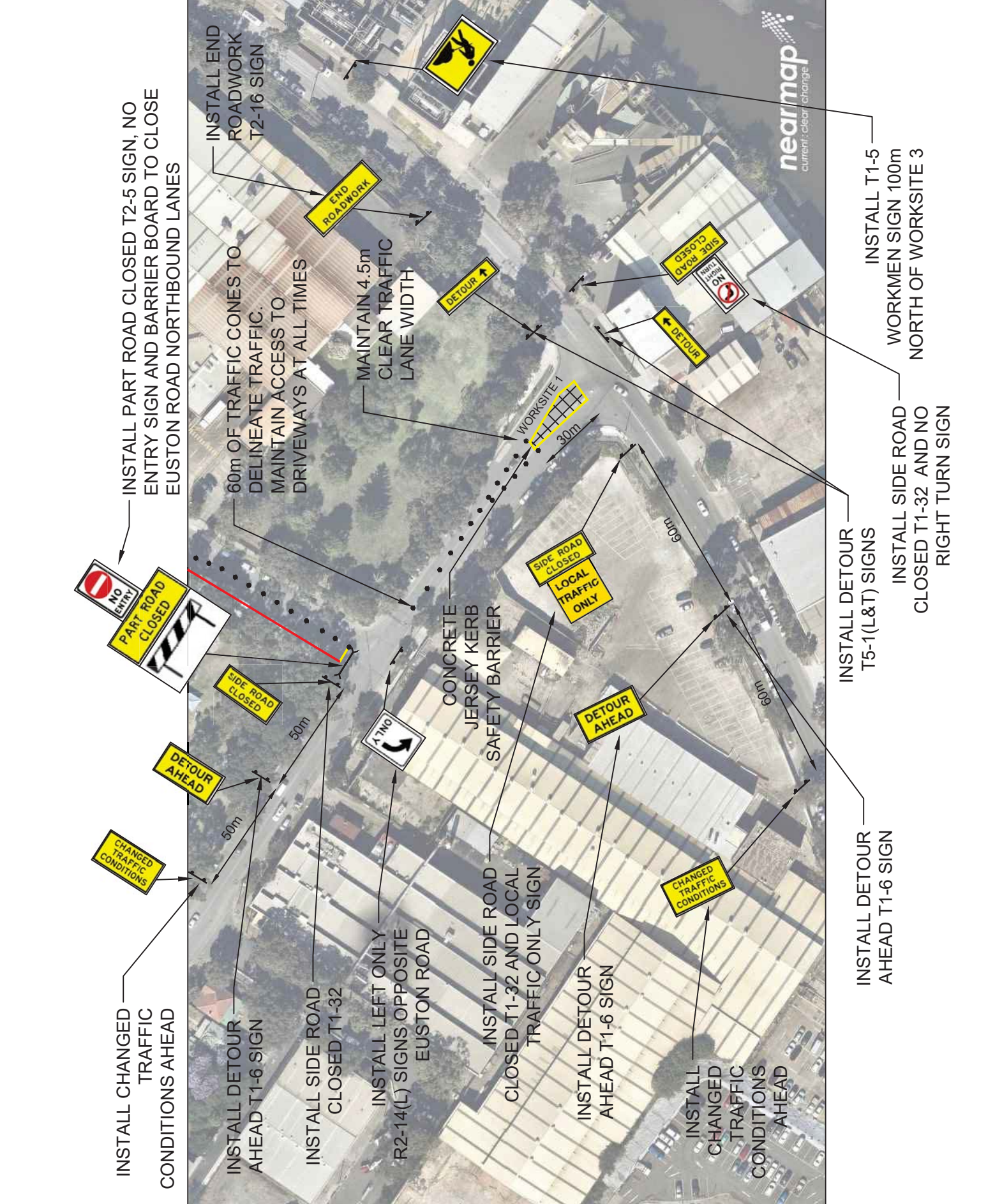
CLEAR: HANLOW PTY LTD
 14 DUNLOP STREET
 SOUTH STRATHFIELD
 NSW 2136

DRAWN: TRAFFIC & SAFETY SOLUTIONS PTY LTD
 NAVIN PRASAD
 19 FORGE STREET
 BLACKTOWN NSW 2148

SITE: EUSTON ROAD, ALEXANDRIA
 CAMPBELL RD TO SYDNEY PARK RD

TITLE: TRAFFIC CONTROL PLAN
 EUSTON ROAD - ONE WAY SOUTHBOUND

SCALE AT AS:	DATE:	DRAWN:	CHECKED:
NOT TO SCALE	01/12/16	NP	NP
SHEET NO.:	DRAWING NO.:	REVISION:	
6/6	TSS-161117-1	A	



Road Works – Euston Road Alexandria

Detour Route map

